



Material Test Report

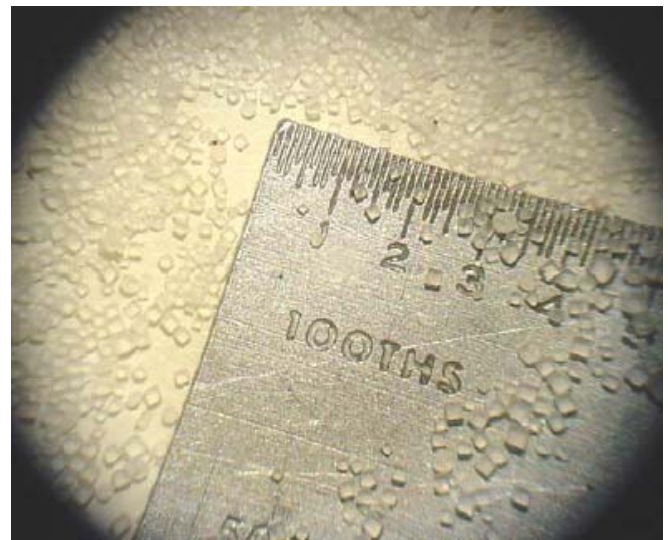


CentriFlow®

Table Salt

CentriFlow®

Date Tested:	June 30, 2006	Temperature:	Ambient (78°F/25.6°C)
Technician:	Scott Tupper	Particle Size:	Dust - 0.02"
Test Location:	Eastern Instruments	Flowability:	Average
CFM Model:	3" Type II CentriFlow®	Cohesiveness:	Slight
Meter Capacity:	2.5 ft³/min	Density (lb/ft³):	70 lb/ft³
Feed System:	Screw Conveyor	Inhibit Setting:	0.200 Volts



Test #2	Flow Rate = 5,200 lb/hr				Percent of Volumetric Capacity = 50%		
Run #	Actual Weight	Metered Weight	Actual/Metered	Delta Weight	% Error		
1	24.16	24.16	1.000	0.000	0.00%		
2	23.28	23.28	1.000	0.000	0.00%		
3	23.28	23.28	1.000	0.000	0.00%		
4	23.14	23.13	1.000	-0.010	-0.04%		
5	22.90	22.89	1.000	-0.010	-0.04%		
Average:			1.000				
STD:			0.0002				
% STD:			0.02%				
Additional Comments: Tested using a 3" CentriFlow® Type II Meter.							

Accuracy Statement:

"The CentriFlow® Meter will provide accuracy to within ±0.25% of reading when operating within ± 10% of the calibrated flow rate, as long as the flow rate is within the operational range of the meter."